

## USER'S GUIDE TO WEB BASED LICENSING

This document describes the new licensing activation mechanism for InTouch Compact Edition. License activation involves three basic steps:

- Get the **Site Code** from the CE Device for entry in the web portal;
- Enter your **Site ID** and License **Serial Number** into the License Activation web portal;
- Generate the **Site Key** and enter it into your Windows CE device.

These steps can be done in two ways:

1. Use a node connected to the Internet with the InTouch Compact Edition Download Utility installed, with your Windows CE Device connected to the Download Utility (via serial or Ethernet). (Typical) [<Click Link>](#)
2. Use any PC connected to the Internet and manually load the Site Key directly into the Windows CE Device. [<Click Link>](#)

Further instructions to create a back up your license [<Click Link>](#)

## METHOD 1 – DIRECTLY FROM THE DOWNLOAD UTILITY

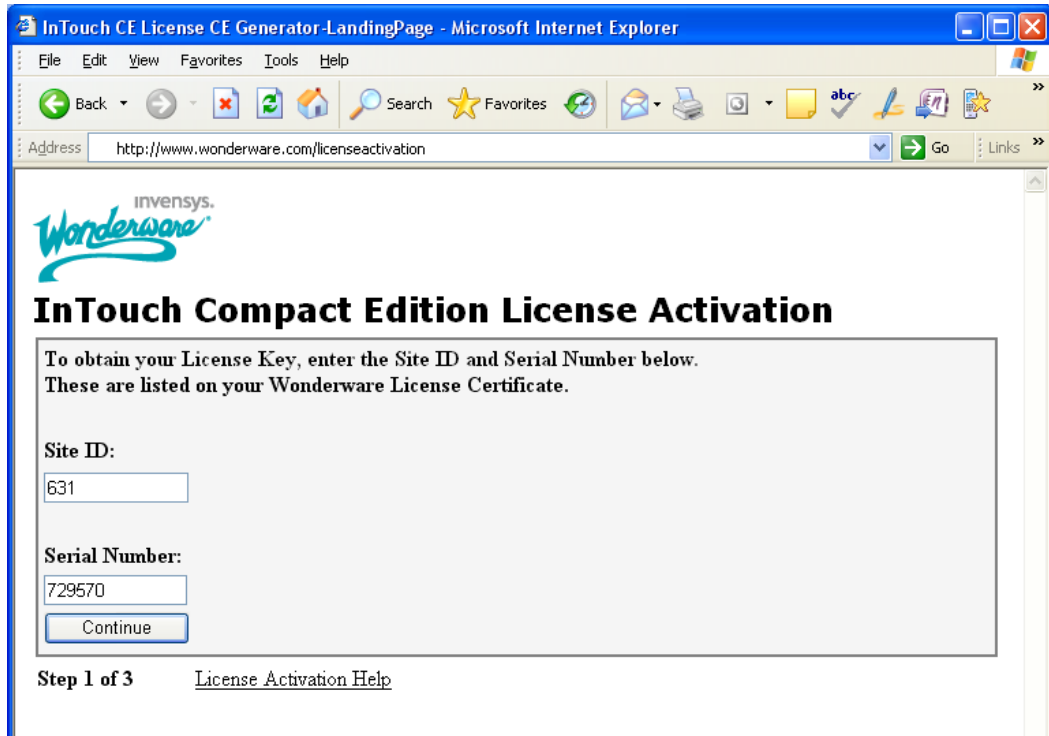
In this method, the Dev PC (which has the InTouch Compact Edition Download Utility installed) requires connection to the Internet. The CE device must be connected to the Dev PC via Serial or Ethernet connection. You will also need to have the Site ID and Serial number from your new InTouch Compact Edition license. These numbers are on the License Certificate.

1. Run the **Download Utility** on the Dev PC, and make a connection to the CE Device. This can be done most easily by going to the Start Menu, or Start / Programs / Wonderware / InTouch / InTouch Compact Edition download utility.

The screenshot shows the 'Download to Device' utility window. The 'Device Configuration' section has three radio buttons: 'IP Address' (selected), 'Serial Port', and 'ActiveSync'. The IP Address is set to 10.2.65.210, and the Serial Port is COM1. There are 'Connect' and 'Disconnect' buttons. Below these are 'Install System Files' and a 'Language' dropdown set to 'English'. The 'Information' section shows 'Status: Connected to target Device v10.1' and 'Processor: x86 Processor'. The 'Download Details' section has two radio buttons: 'Application' (selected) and 'Single File'. There are 'From' and 'To' path fields with browse buttons. Below are 'Send', 'Run', and 'Stop' buttons. The 'License Configuration' section has a checked checkbox. The 'Type' is 'Target Device license NEEDS an upgrade'. The 'Code' field contains '770A 603A 56D8 E9C8 1371 72FB FE0D FA0A 7E'. The 'Key' field contains 'FB 2FF7 F304 2097 D9A2 D494 7B64 EB42 02F2 BF'. There is a 'Send' button. The 'Diagnostics' section has two radio buttons: 'ITC Log Viewer' (selected) and 'ITC Data Spy'. There is a 'Launch' button. A 'Close' button is at the bottom right.

2. Connect the download utility to the device. Refer to the InTouch Compact Edition user guide if necessary.
3. Once connected to the device, check the box for **License Configuration**.
4. Once the License Configuration section is active, use the mouse to select the entire string in the **Code** field, right click, and select Copy. This is the device **Site Code**.

- Using Internet Explorer on the Dev PC, browse to [www.wonderware.com/licenseactivation](http://www.wonderware.com/licenseactivation).



- At "Step 1 of 3" for the web activation, enter in the Site ID and Serial number from the InTouch Compact Edition license certificate, and press the **Continue** button.

- At "Step 2 of 3", it will request that you enter the **Site Code** from the CE Device.

The screenshot shows a web browser window titled "InTouch Compact Edition License Activation - Microsoft Internet Explorer". The address bar shows "http://www.wonderware.com/licenseactivation". The page content includes the Wonderware logo and the title "InTouch Compact Edition License Activation". The form contains the following fields and values:

- Site Name:** Cowland Dairy - Orange County, California
- Product:** InTouch Compact Edition, 500 tags
- Product Version:** 10.1
- Site Code:** DF2D CDC5 F1C6 C05D 97C1 DCE9 DE62 9815 17
- Hardware Device Vendor:** Beckhoff

Below the Site Code field is a button labeled "Generate Site Key". At the bottom of the form, it says "Step 2 of 3" and provides a link for "License Activation Help".

- Right click in this **Site Code** field, and select Paste to paste the **Site Code** copied from the Download Utility/Device in step 4.
- Select the manufacturer of your specific hardware, and press the **Generate Site Key** button.

- At "Step 3 of 3", you are presented with a new string called the **Site Key**. Make use of the **Print Page** button to save a hard copy of this information.

**invensys.**  
**Wonderware**

## InTouch Compact Edition License Activation

**Site Name:**  
Cowland Dairy - Orange County, California

**Product:**  
InTouch Compact Edition, 500 tags

**Product Version:**  
10.1

**Hardware Device Vendor:**  
Beckhoff

**Site Code:**  
DF2D CDC5 F1C6 C05D 97C1 DCE9 DE62 9815 17

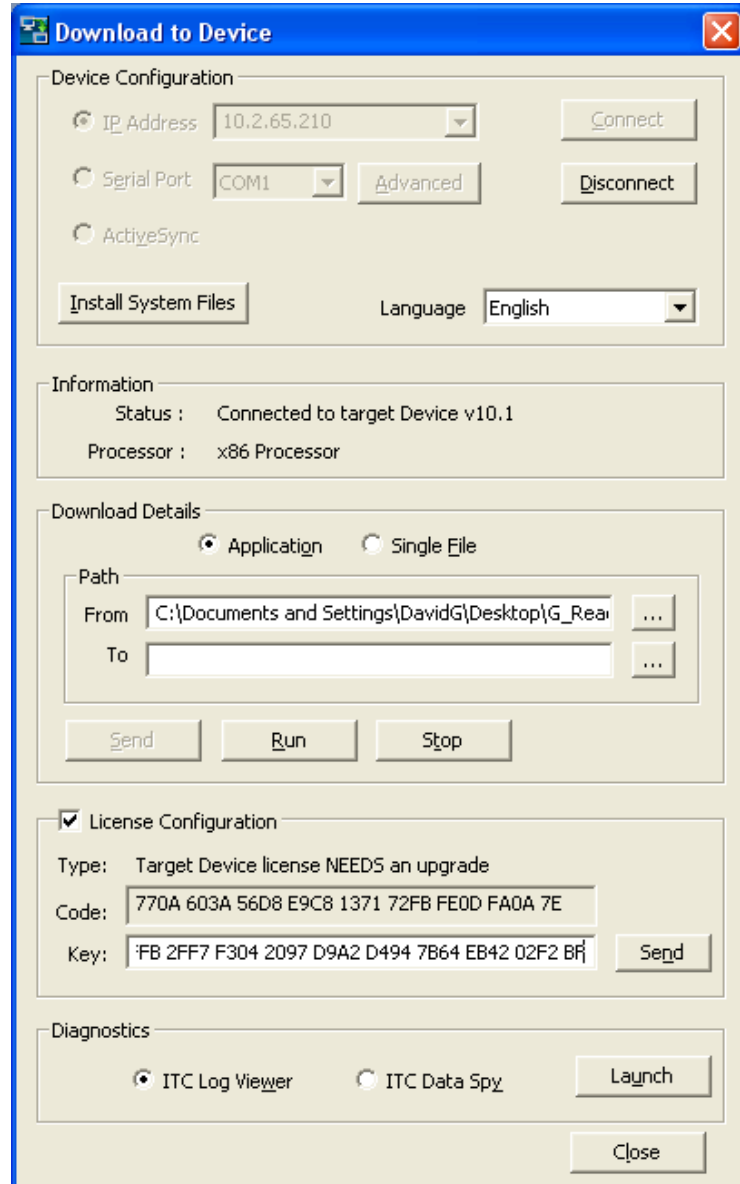
**Site Key:**  
1651 ACEB 4420 03EB 681E 2478 3D10 7BAC 1A40 AC

Copy and paste (or manually type) this Site Key into the appropriate field of the Change License dialog on your Hardware device, or into the field provided on the Download Utility. Be sure to print this information for your records.

**Step 3 of 3**      [License Activation Help](#)

- Select the entire string that is in the Site Key field with the mouse, right click, and select Copy.

12. Navigate back to the **Download Utility**, place the cursor in the License Configuration **Key** field, right click, and select Paste.

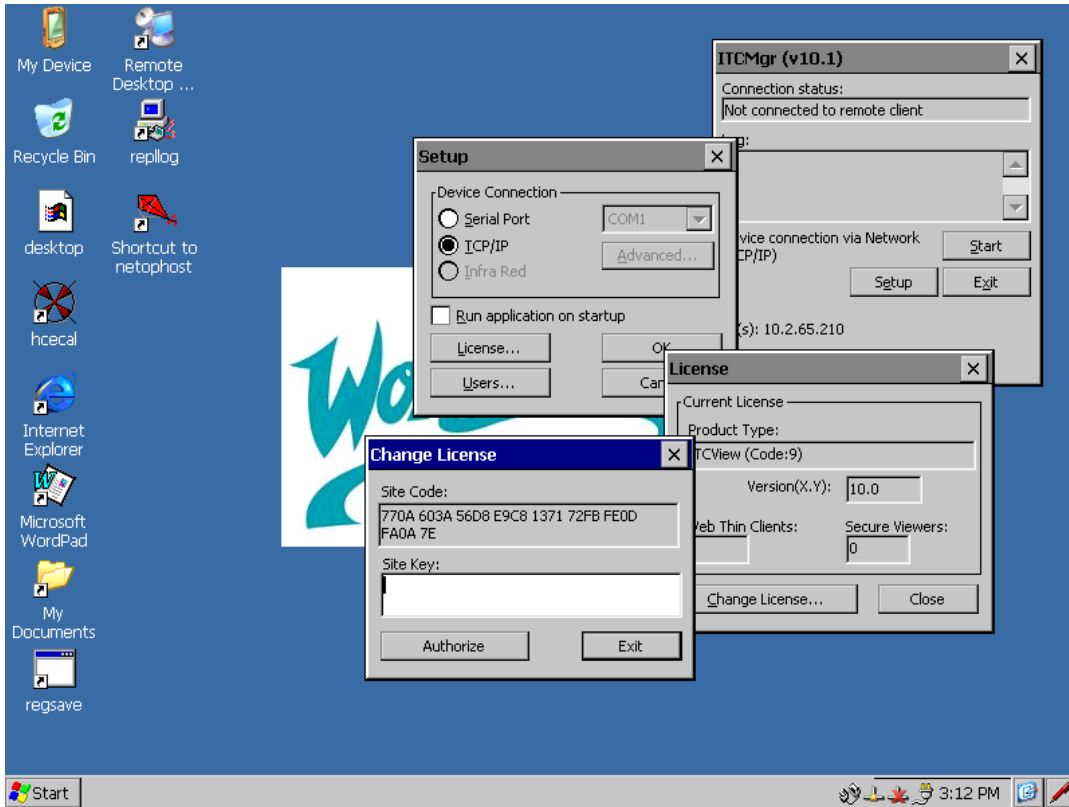


13. Press the **Send** button, and acknowledge the dialogs that follow.
14. The key will enter the license system on the Windows CE device and the registry of the device saves automatically. In the event registry save does not occur or otherwise fails, it will appear as if the unit is unlicensed after a system restart. Simply follow these same steps to once again license the device, and then ensure that the registry is in fact saved (from the device and based on the device maker's instructions).
15. Refer to the CREATING A BACKUP section for details on creating a backup of this license. [<Click Link>](#)

## METHOD 2 – MANUALLY – (PRONE TO POSSIBLE TYPING ERRORS)

In this method, you simply use any PC with a connection to the Internet, and then manually gather the data, and type it into the appropriate fields. You will need to have the Site ID and Serial number from your new InTouch Compact Edition license, as well as some other PC connected to the Internet. If the CE device is Touch Screen Based, use of a keyboard may help.

1. Obtain the **Site Code** from the Device, run ITCMgr.exe on the device and press Setup / License / Change License. Write or otherwise gather the string for entry into the appropriate field on the web page.



2. On a PC connected to the Internet, use a Web Browser (Internet Explorer, Firefox, Chrome, etc) browse to [www.wonderware.com/licenseactivation](http://www.wonderware.com/licenseactivation).
3. At "Step 1 of 3" for the web activation, enter in the Site ID and Serial number from the InTouch Compact Edition license certificate, and press the **Continue** button.

**invensys.**  
**Wonderware**

## InTouch Compact Edition License Activation

To obtain your License Key, enter the Site ID and Serial Number below.  
These are listed on your Wonderware License Certificate.

**Site ID:**

**Serial Number:**

**Step 1 of 3**    [License Activation Help](#)

4. At "Step 2 of 3", enter the **Site Code** gathered from the CE Device into **Site Code** field the Web page.
5. Select the manufacturer of your specific hardware, and press the **Generate Site Key** button.

**invensys.**  
**Wonderware**

## InTouch Compact Edition License Activation

**Site Name:**  
Cowland Dairy - Orange County, California

**Product:**  
InTouch Compact Edition, 500 tags

**Product Version:**  
10.1

Enter the Site Code from your device

**Site Code:**  
DF2D CDC5 F106 C05D 97C1 DCE9 DE62 9815 17

**Hardware Device Vendor:**  
Beckhoff

**Step 2 of 3**      [License Activation Help](#)

6. At "Step 3 of 3", you are presented with a new string called the **Site Key**. Make use of the **Print Page** button to save a hard copy of this information. Use a printout, write, or otherwise gather the string for entry back on the CE Device.

**invensys.**  
**Wonderware**

## InTouch Compact Edition License Activation

**Site Name:**  
Cowland Dairy - Orange County, California

**Product:**  
InTouch Compact Edition, 500 tags

**Product Version:**  
10.1

**Hardware Device Vendor:**  
Beckhoff

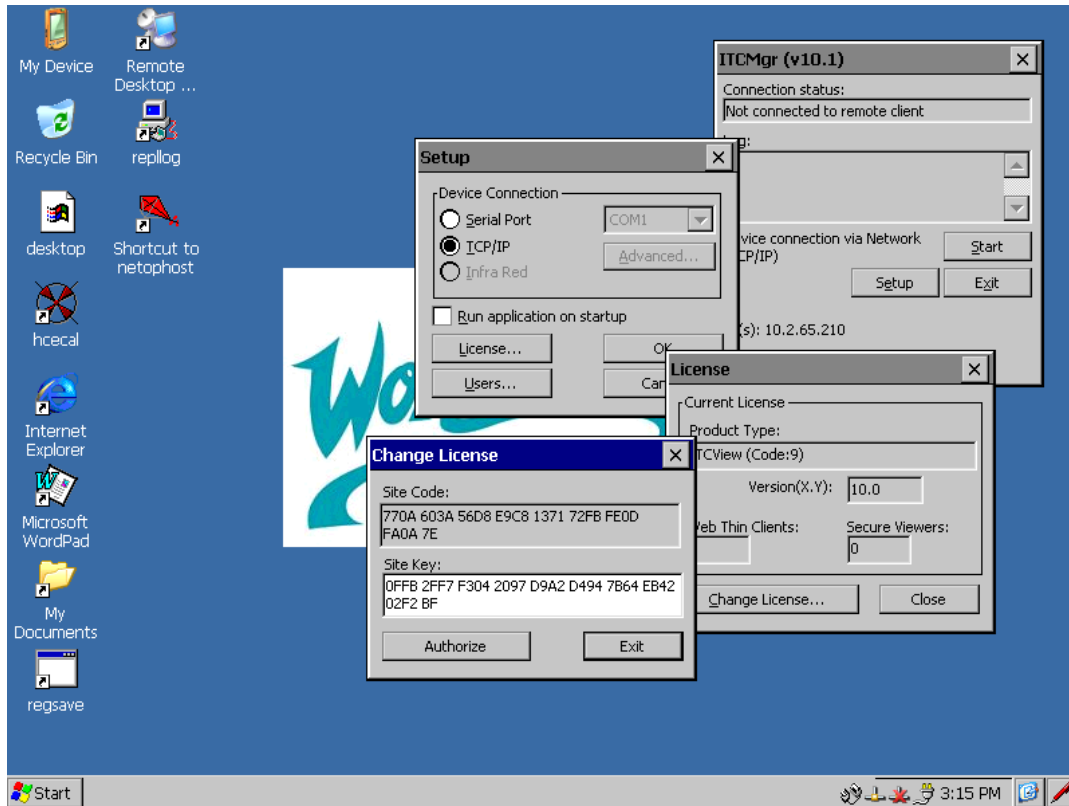
**Site Code:**  
DF2D CDC5 F1C6 C05D 97C1 DCE9 DE62 9815 17

**Site Key:**  
1651 ACEB 4420 03EB 681E 2478 3D10 7BAC 1A40 AC

Copy and paste (or manually type) this Site Key into the appropriate field of the Change License dialog on your Hardware device, or into the field provided on the Download Utility. Be sure to print this information for your records.

**Step 3 of 3**      [License Activation Help](#)

- On the CE Device, navigate back to the **Change License** window (ITCMgr.exe – press Setup / License / Change License) and enter the **Site Key** into the **Site Key** box of the **Change License** window. You can use a keyboard, or use the on screen keyboard with a mouse or touch screen.
- Press **Authorize**. The key will enter into the device licensing, and you then see a prompt suggesting you save the registry. Failure to save the registry will result in the licensing defaulting to its previous state after the next power cycle. Refer to your hardware support materials for the specific steps to save the registry on your device.


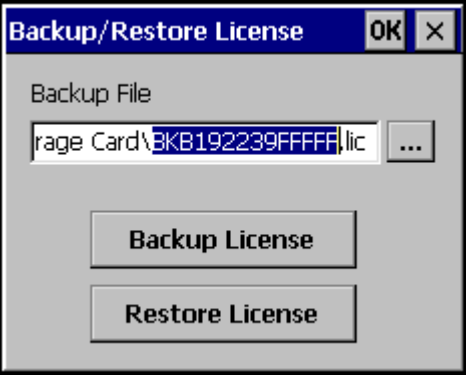
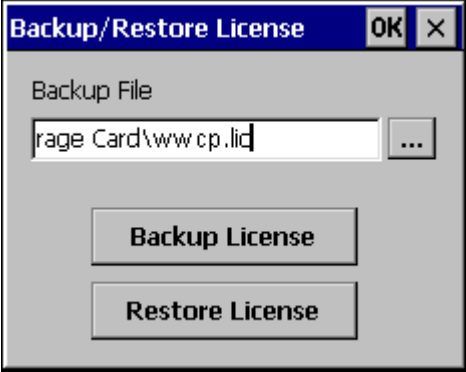



- Refer to the CREATING A BACKUP section for details on creating a backup of this license. [<Click Link>](#)

## CREATING A BACKUP OF THE LICENSE.

1. Click **Start** -> **Run** and enter (including quotes) "**\Storage Card\LicenseBackup.exe**" (you may simply browse to that location as well, and it may be in an alternate location, such as under the InTouchCompact folder)
2. This will launch the Backup/Restore License utility. Delete the default filename prefix (in this example it is BKB192239FFFFF) and enter **wwcp** (the filename should be wwcp.lic), or the file name of your choice. Once the name is entered, click **Backup License**.
3. Once the following dialog box is displayed, click **OK**.
4. At this point, the system setup is complete. You should now make a copy of this file to place in safe storage. Should you need to replace the CF card of this device, you would be able to restore the InTouch Compact Edition licensing to the device by using this utility, and selecting to Restore the license.

If the LicenseBackup.exe file is missing, contact Wonderware Technical support.

 <p>Step 1</p>	 <p>Step 2</p>
 <p>Step 3</p>	 <p>Step 4</p>